



HACIENDA WEST

a boutique
DEVELOPMENT

NORTH
COAST

Get set for a redefined summer as you land your feet on our boutique summer destination, Hacienda West.

This time we're taking you to the west side, where you'll luxuriate every second of it, especially after our massive hit in Hacienda Bay & Hacienda White.





BOUTIQUE development



Hacienda West is a one of a kind boutique experience in the North Coast for all summer souls who have an eye for beauty and cherish simplicity.

It is the summer escape you've been waiting for. It is the spot for you to unwind & enjoy laid-back luxury in a cozy personalized setting that's found nowhere else.

Wherever you are, you'll enjoy a breathtaking sea view with our elevated homes, along with private lagoons. We've also brought you a sublime hotel to repose & a community hub so you can spend quality time with the people you love. Sip on a cup of coffee & get the relaxation you deserve.



PERFECTLY *located*

We're taking you West, only 10km away from Ras El Hekma where the shoreline meets the clearest Mediterranean waters.





DISTINCTIVE *designs*



Our boutique development architecture is all about combining originality and elegance, altogether with authenticity in the heart of the North Coast.

Inspired by Mediterranean architecture, we blended our laid-back luxury feel with a minimalistic approach.

Bringing together a sense of coziness, whilst combining a daring style with smooth edged corners sculpted for an effortless look.





TRANQUIL *homes*



Come home to an opulent setting, where minimalism meets elegance, so spacious for a worldly ambience. It's the home you've been waiting for.







CHARMING *beach*



Cave into our coastline, where pristine waters meet crystal sands in the heart of the North Coast only 10 km away from Ras El Hekma. This is the place to be if you want to de-stress, bask in the sun or dive into our endless shades of blue waters.





DIFFERENT *experiences*



We've brought you what makes a summer statement. You'll love every second of it. Whatever you wish for, there's the perfect spot for it.

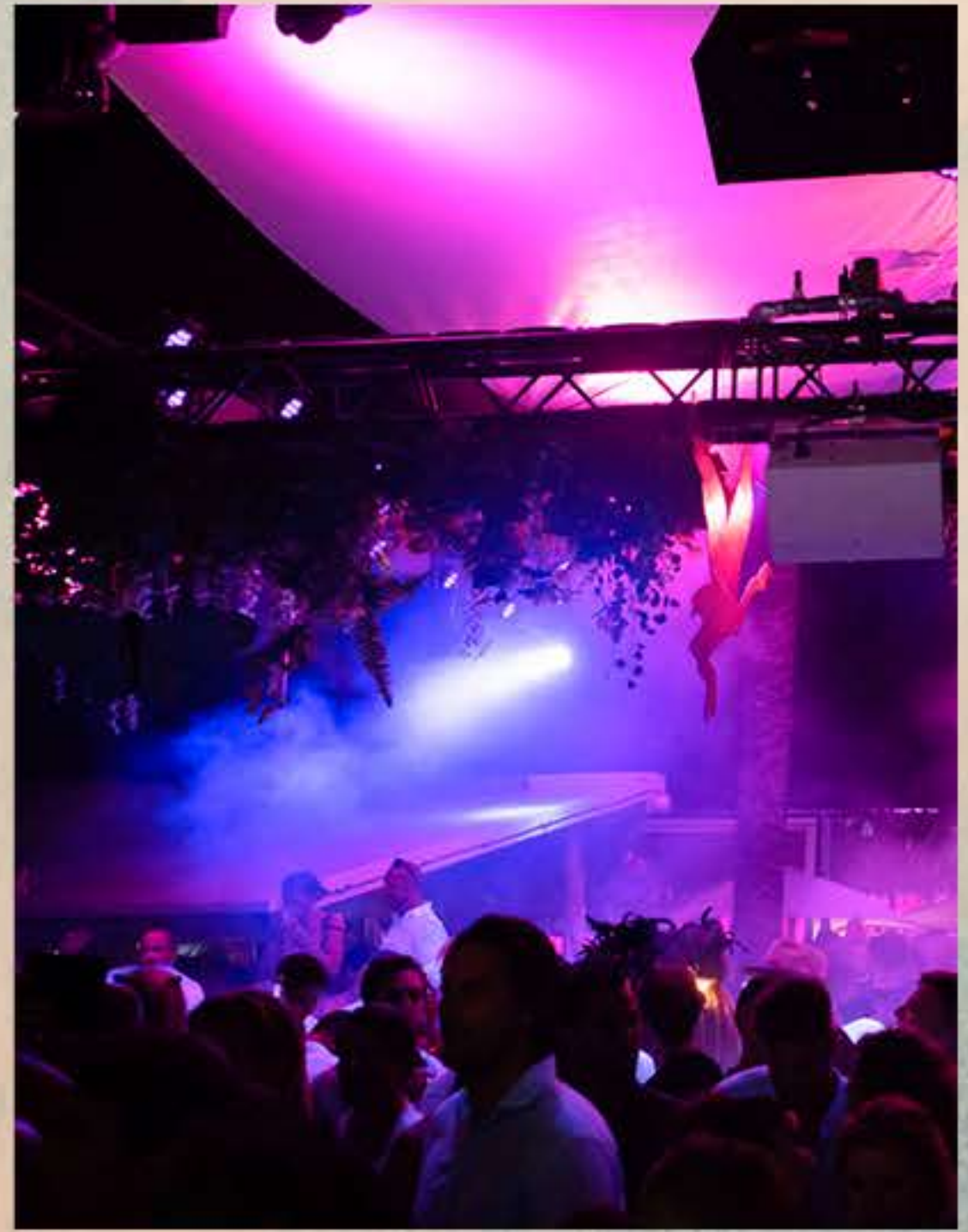
We promise to offer you charm and make your life easier, while building everything you need within arms reach :

- **World class branded hotel** where guests can take a break and unwind
- **Neighbourly feel community Hub** that is a perfect hang out spot for your friends and family
- **Fully integrated sports arena** for those who give it their all
- **State of the art gym and fitness facilities** for the sports fanatics
- **Exceptional restaurants** ideal for day and night
- **Convenient kids area** for your children to effortlessly spread their wings



HACIENDA WEST

Summer Experience



Hacienda West proposes a radiant, pleasant and lively summer experience by introducing

• HOTEL • BEACH BAR • SERVICED APARTMENTS

Suit your mood

BLUE[®]
MARLIN
IBIZA
.....

BEACH *bar*

By Blue Marlin Ibiza



Adding to the uniqueness of BMI, is its iconic beach bar that delivers a soothing ambiance of ultimate luxury, encompassing a wide array of mouthwatering tapas, specials and cocktails that keep you refreshed all day long, serving you with a truly personalized experience that suits your taste.



HOTEL



Hacienda West presents an hotel with global celebration of music infused beaches, an international movement of fashionably beautiful living with an encompassing variety of assets that create the perfect balance between serene daytime and unending nightlife.

SERVICED *apartments*



Hacienda West is bringing you a lifelong opportunity to indulge in a true tranquilizing experience every day. The perfect balance between the comfort of your personal home, and never-ending hospitality. Introducing Hacienda West Boutique's high-end serviced apartments, equipped with the most innovative furniture, and amenities, creating a far more relaxing space.



MASTER *plan*



*North Coast
Hacienda West
Boutique Development*

A location that inspires *relaxation*



Disclaimer:

1. Renders and accompanying visual materials are not to scale and are intended for illustrative purposes.
2. All Landscaping is not included in the property and solely for illustrative purposes.
3. Roof finishes and pergolas are for presentation purposes only and are optional based on client's request.
4. Palm Hills Developments retains the right to make alterations.

A terrace with a view



Where the mood is always up to *you*



Disclaimer:

1. Renders and accompanying visual materials are not to scale and are intended for illustrative purposes.
2. All Landscaping is not included in the property and solely for illustrative purposes.
3. Roof finishes and pergolas are for presentation purposes only and are optional based on client's request.
4. Palm Hills Developments retains the right to make alterations.

Where water is a way of *life*



Where everyday is a good *day*



Disclaimer:

1. Renders and accompanying visual materials are not to scale and are intended for illustrative purposes.
2. All Landscaping is not included in the property and solely for illustrative purposes.
3. Roof finishes and pergolas are for presentation purposes only and are optional based on client's request.
4. Palm Hills Developments retains the right to make alterations.

It's where dreams *awake*



Where every night is a
goodnight



Disclaimer:

1. Renders and accompanying visual materials are not to scale and are intended for illustrative purposes.
2. All Landscaping is not included in the property and solely for illustrative purposes.
3. Roof finishes and pergolas are for presentation purposes only and are optional based on client's request.
4. Palm Hills Developments retains the right to make alterations.

Beach House 1

First Row

Total Built Up Area: 339.90m²
Average Land Area: 480.50m²



Disclaimer:

1. Renders and accompanying visual materials are not to scale and are intended for illustrative purposes.
2. All Landscaping is not included in the property and solely for illustrative purposes.
3. Roof finishes and pergolas are for presentation purposes only and are optional based on client's request.
4. Palm Hills Developments retains the right to make alterations.

Beach House 1

First Row



Ground Floor

Ground Floor	
Vestibule	1.70X3.45
Reception - Dining	8.00X8.45
Guest Bedroom	3.60X3.75
Guest Bedroom Bathroom	2.30X1.90
Kitchen	2.70X4.50
Guest Toilet	1.60X2.10
Nanny's Bedroom	2.45X2.00
Nanny's Bathroom	2.45X1.10
Driver's Bedroom	2.45X1.70
Driver's Bathroom	2.45X1.10



First Floor

First Floor	
Master Bedroom	3.60X4.50
Master Dressing	2.50X1.60
Master Bathroom	2.40X2.10
Bedroom 1	3.60X3.75
Bedroom 1 Bathroom	2.30X1.90
Bedroom 2	4.30X3.60
Bedroom 2 Bathroom	1.90X2.30
Bedroom 2 Terrace	0.90X1.75
Bedroom 3	4.30X3.60
Bedroom 3 Bathroom	1.90X2.30
Bedroom 3 Terrace	0.90X1.75
Bedroom 4	4.30X3.60
Bedroom 4 Bathroom	3.05X1.70

Disclaimer:

- 1. Renders and accompanying visual materials are not to scale and are intended for illustrative purposes.
- 2. All Landscaping is not included in the property and solely for illustrative purposes.
- 3. Roof finishes and pergolas are for presentation purposes only and are optional based on client's request.
- 4. Palm Hills Developments retains the right to make alterations.

Beach House 2

Second Row

Total Built Up Area: 264.00m²
Average Land Area: 364.50m²



Disclaimer:

1. Renders and accompanying visual materials are not to scale and are intended for illustrative purposes.
2. All Landscaping is not included in the property and solely for illustrative purposes.
3. Roof finishes and pergolas are for presentation purposes only and are optional based on client's request.
4. Palm Hills Developments retains the right to make alterations.

Beach House 2

Second Row



Ground Floor

Ground Floor	
Porch	1.50X1.40
Vestibule	1.65X5.45
Reception - Dining	7.55X7.25
Driver's Bedroom	2.00X1.85
Driver's Bathroom	1.35X1.85
Kitchen	3.45X3.60
Guest Toilet	2.15X1.75
Nanny's Bedroom	1.85X2.60
Nanny's Bathroom	2.00X1.50



First Floor

First Floor	
Master Bedroom	3.80X4.20
Master Terrace	3.70X1.00
Master Dressing	2.50X1.70
Master Bathroom	3.60X1.75
Bedroom 1	3.60X3.60
Bedroom 1 Bathroom	2.35X1.70
Bedroom 2	3.60X3.60
Bedroom 2 Bathroom	2.30X1.70
Bedroom 3	3.60X4.15
Bedroom 3 Bathroom	2.30X1.75
Kitchenette	0.85X2.30

Disclaimer:

- 1. Renders and accompanying visual materials are not to scale and are intended for illustrative purposes.
- 2. All Landscaping is not included in the property and solely for illustrative purposes.
- 3. Roof finishes and pergolas are for presentation purposes only and are optional based on client's request.
- 4. Palm Hills Developments retains the right to make alterations.

Beach House 3

Third Row

Total Built Up Area: 197.00m²
Average Land Area: 269.40m²

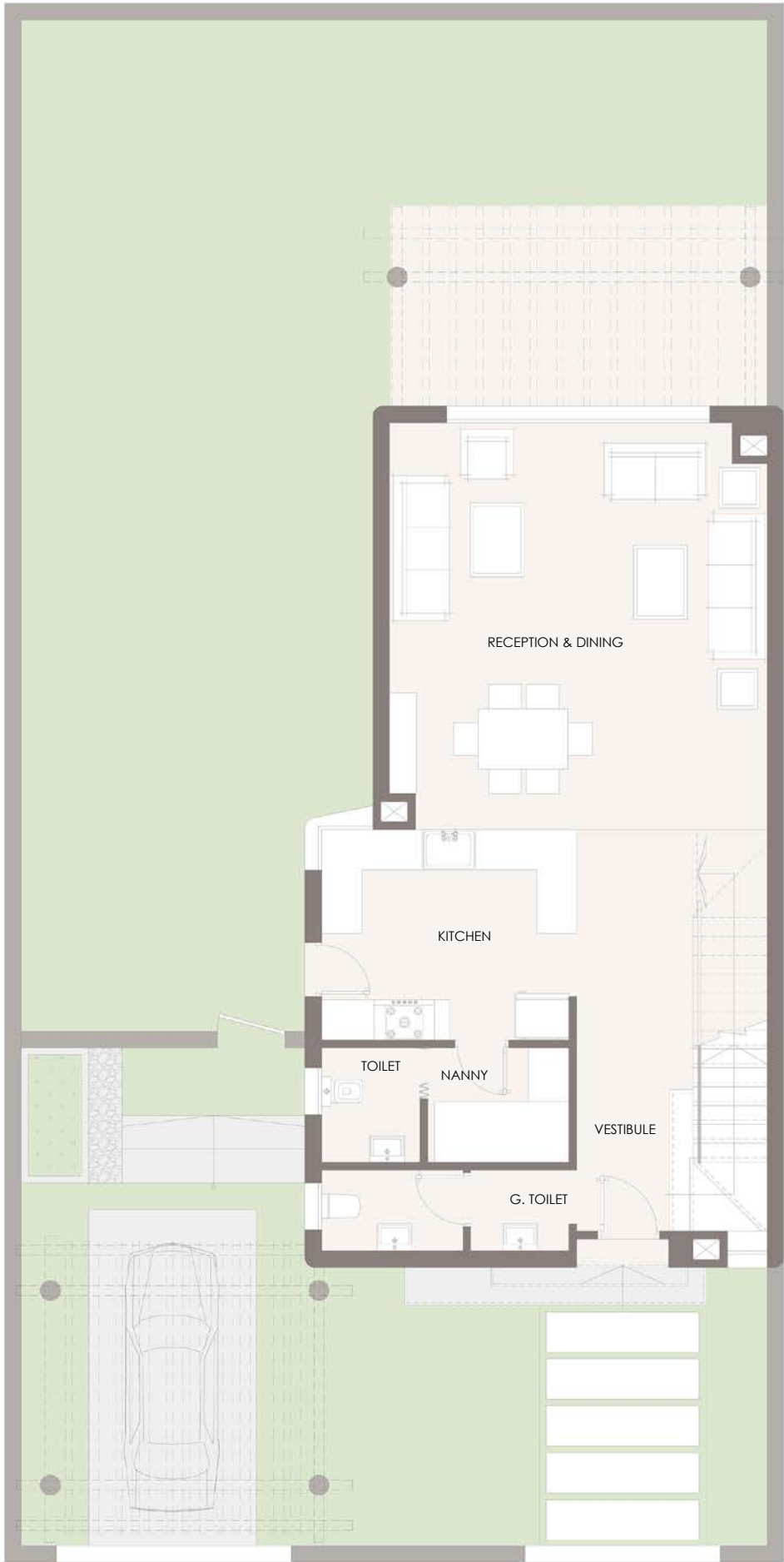


Disclaimer:

1. Renders and accompanying visual materials are not to scale and are intended for illustrative purposes.
2. All Landscaping is not included in the property and solely for illustrative purposes.
3. Roof finishes and pergolas are for presentation purposes only and are optional based on client's request.
4. Palm Hills Developments retains the right to make alterations.

Beach House 3

Third Row



Ground Floor

Ground Floor	
Vestibule	1.75X6.00
Reception - Dining	5.60X6.05
Kitchen	3.80X3.15
Guest Toilet	3.70X1.20
Nanny's Bedroom	2.10X1.70
Nanny's Bathroom	1.45X1.70



First Floor

First Floor	
Master Bedroom	3.60X4.10
Master Dressing	0.90X1.60
Master Bathroom	1.90X2.60
Bedroom 1	4.20X3.60
Bedroom 1 Bathroom	3.15X1.70
Bedroom 2	3.60X5.60
Bedroom 2 Bathroom	1.70X2.40
Kitchenette	0.90X1.25

Disclaimer:

- 1. Renders and accompanying visual materials are not to scale and are intended for illustrative purposes.
- 2. All Landscaping is not included in the property and solely for illustrative purposes.
- 3. Roof finishes and pergolas are for presentation purposes only and are optional based on client's request.
- 4. Palm Hills Developments retains the right to make alterations.

Lime Senior chalet

Chalet A- Ground Area: 155.70m²
Chalet A- First Area: 175.20m²
Chalet B- Ground Area: 155.70m²
Chalet B- First Area: 175.20m²



Disclaimer:

1. Renders and accompanying visual materials are not to scale and are intended for illustrative purposes.
2. All Landscaping is not included in the property and solely for illustrative purposes.
3. Roof finishes and pergolas are for presentation purposes only and are optional based on client's request.
4. Palm Hills Developments retains the right to make alterations.

Lime Senior chalet



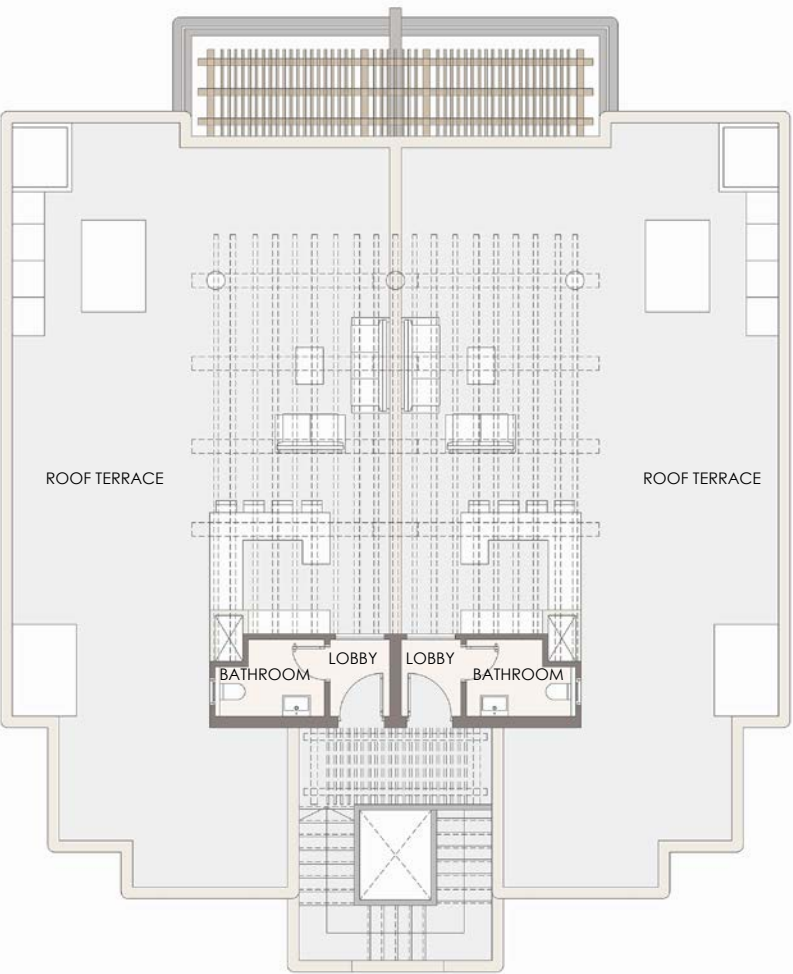
Ground Floor

Chalet A - Ground Floor	
Lobby	1.30X3.90
Reception	4.45X4.20
Kitchen	2.50X2.70
Dining	3.80X4.25
Master Bedroom	3.65X3.60
Master Bathroom	2.45X2.00
Bedroom 2	3.40X3.60
Bedroom 2 Bathroom	1.50X2.60
Bedroom 1	3.10X3.60
Bedroom 1 Bathroom	3.10X1.50
Covered Terrace	4.30X2.20
Guest Toilet	2.40X1.10
Maid's Room	2.00X1.75
Maid's Bath	1.00X1.75

Chalet A - First Floor	
Vestibule	1.30X3.90
Reception	4.45X4.20
TERRACE	4.30X2.20
Kitchen	2.50X2.70
Dining	3.80X4.25
Master Bedroom	3.65X3.60
Master Bathroom	2.45X2.00
Bedroom 2	3.40X3.60
Bedroom 2 Bathroom	1.50X2.60
Bedroom 1	3.10X3.60
Bedroom 1 Bathroom	3.10X1.50
Guest Toilet	2.40X1.10
Maid's Room	2.00X1.50
Maid's Bath	1.00X1.75
Lobby	1.30X1.70
Bathroom	2.40X1.70
Roof Terrace	123.90 m²



First Floor



Roof

Chalet B - Ground Floor	
Lobby	1.30X3.90
Reception	4.45X4.20
Kitchen	2.50X2.70
Dining	3.80X4.25
Master Bedroom	3.65X3.60
Master Bathroom	2.45X2.00
Bedroom 2	3.40X3.60
Bedroom 2 Bathroom	1.50X2.60
Bedroom 1	3.10X3.60
Bedroom 1 Bathroom	3.10X1.50
Covered Terrace	4.30X2.20
Guest Toilet	2.40X1.10
Maid's Room	2.00X1.75
Maid's Bath	1.00X1.75

Chalet B - First Floor	
Vestibule	1.30X3.90
Reception	4.45X4.20
TERRACE	4.30X2.20
Kitchen	2.50X2.70
Dining	3.80X4.25
Master Bedroom	3.65X3.60
Master Bathroom	2.45X2.00
Bedroom 2	3.40X3.60
Bedroom 2 Bathroom	1.50X2.60
Bedroom 1	3.10X3.60
Bedroom 1 Bathroom	3.10X1.50
Guest Toilet	2.40X1.10
Maid's Room	2.00X1.50
Maid's Bath	1.00X1.75
Lobby	1.30X1.70
Bathroom	2.40X1.70
Roof Terrace	123.90 m²

Disclaimer:

1. Renders and accompanying visual materials are not to scale and are intended for illustrative purposes.
2. All Landscaping is not included in the property and solely for illustrative purposes.
3. Roof finishes and pergolas are for presentation purposes only and are optional based on client's request.
4. Palm Hills Developments retains the right to make alterations.

Lime Junior chalet

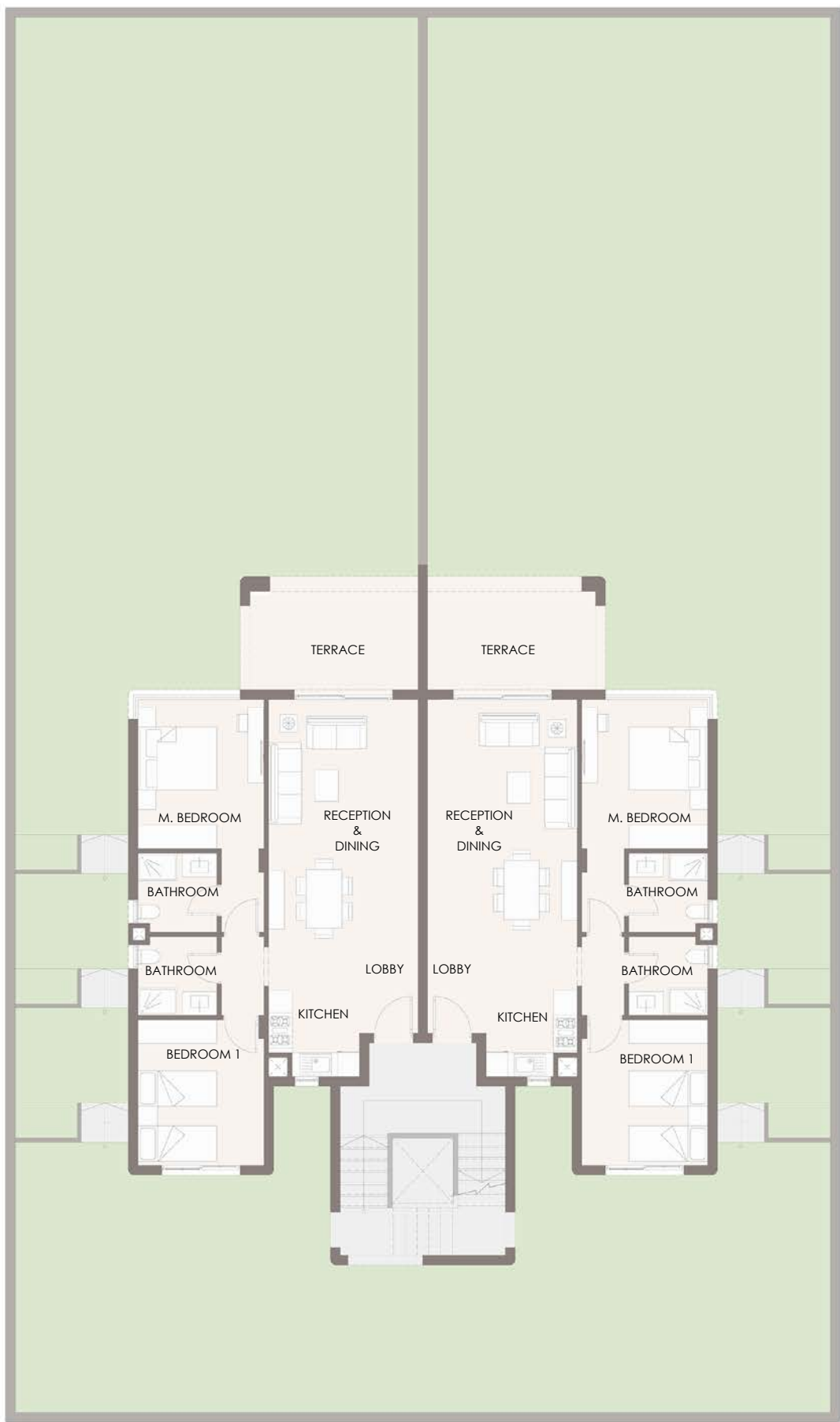
Chalet A- Ground Area: 108.10m²
Chalet A- First Area: 126.80m²
Chalet B- Ground Area: 108.10m²
Chalet B- First Area: 126.80m²



Disclaimer:

1. Renders and accompanying visual materials are not to scale and are intended for illustrative purposes.
2. All Landscaping is not included in the property and solely for illustrative purposes.
3. Roof finishes and pergolas are for presentation purposes only and are optional based on client's request.
4. Palm Hills Developments retains the right to make alterations.

Lime Junior
chalet



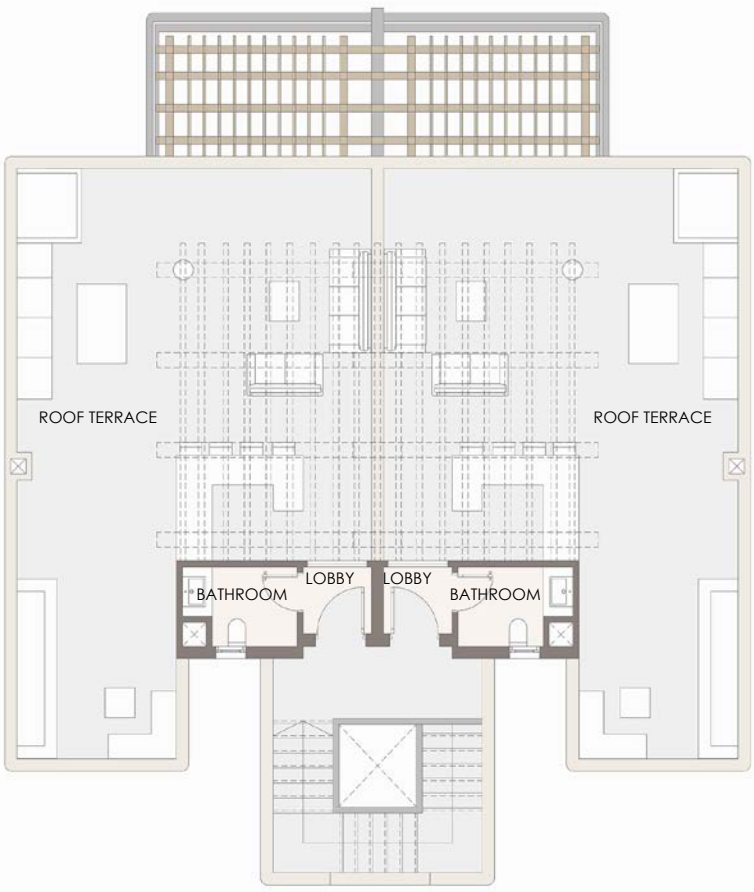
Ground Floor

Chalet A - Ground Floor	
Lobby	1.50X1.20
Reception & Dining	3.80X7.30
Kitchen	2.30X2.30
Master Bedroom	3.20X3.80
Master Bathroom	2.00X2.00
Bedroom I	3.20X3.70
Covered Terrace	4.25X2.50
Bathroom	2.00X2.00

Chalet A - First Floor	
Vestibule	1.50X1.20
Reception & Dining	3.80X7.30
TERRACE	4.25X2.50
Kitchen	2.30X2.30
Master Bedroom	3.20X3.80
Master Bathroom	2.00X2.00
Bedroom I	3.20X3.70
Bathroom	2.00X2.00
Lobby	1.35X1.35
Bathroom	2.30X1.60
Roof Terrace	76.00 m²



First Floor



Roof

Chalet B - Ground Floor	
Lobby	1.50X1.20
Reception & Dining	3.80X7.30
Kitchen	2.30X2.30
Master Bedroom	3.20X3.80
Master Bathroom	2.00X2.00
Bedroom I	3.20X3.70
Covered Terrace	4.25X2.50
Bathroom	2.00X2.00

Chalet B - First Floor	
Vestibule	1.50X1.20
Reception & Dining	3.80X7.30
TERRACE	4.25X2.50
Kitchen	2.30X2.30
Master Bedroom	3.20X3.80
Master Bathroom	2.00X2.00
Bedroom I	3.20X3.70
Bathroom	2.00X2.00
Lobby	1.35X1.35
Bathroom	2.30X1.60
Roof Terrace	76.00 m²

Disclaimer:

- 1. Renders and accompanying visual materials are not to scale and are intended for illustrative purposes.
- 2. All Landscaping is not included in the property and solely for illustrative purposes.
- 3. Roof finishes and pergolas are for presentation purposes only and are optional based on client’s request.
- 4. Palm Hills Developments retains the right to make alterations.

Olive Three in One chalet

Chalet A- Ground Area: 155.70m²
Chalet B- Ground Area: 155.70m²
Chalet B- First Area: 194.00m²



Disclaimer:

1. Renders and accompanying visual materials are not to scale and are intended for illustrative purposes.
2. All Landscaping is not included in the property and solely for illustrative purposes.
3. Roof finishes and pergolas are for presentation purposes only and are optional based on client's request.
4. Palm Hills Developments retains the right to make alterations.

Olive Three in One

chalet



Ground Floor

Chalet A - Ground Floor	
Vestibule	1.30X3.90
Reception	4.45X4.20
Kitchen	2.50X2.70
Dining	3.80X4.25
Master Bedroom	3.65X3.60
Master Bedroom Bathroom	2.45X2.00
Bedroom 1	3.10X3.60
Bedroom 1 Bathroom	3.10X1.50
Bedroom 2	3.40X3.60
Bedroom 2 Bathroom	1.50X2.60
Covered Terrace	4.30X2.20
Guest Toilet	2.40X1.10
Maid's Room	2.00X1.75
Maid's Bath	1.00X1.75

Chalet B - Ground Floor	
Vestibule	1.30X3.90
Reception	4.45X4.20
Kitchen	2.50X2.70
Dining	3.80X4.25
Master Bedroom	3.65X3.60
Master Bedroom Bathroom	2.45X2.00
Bedroom 1	3.10X3.60
Bedroom 1 Bathroom	3.10X1.50
Bedroom 2	3.40X3.60
Bedroom 2 Bathroom	1.50X2.60
Covered Terrace	4.30X2.20
Guest Toilet	2.40X1.10
Maid's Room	2.00X1.75
Maid's Bath	1.00X1.75



First Floor

Chalet B - First Floor	
Vestibule	1.30X3.90
Reception	4.45X4.20
Terrace	4.30X2.20
Kitchen	2.50X2.70
Dining	3.80X4.25
Master Bedroom	3.65X3.60
Master Bathroom	2.45X2.00
Bedroom 1	3.10X3.60
Bedroom 1 Bathroom	3.10X1.50
Bedroom 2	3.40X3.60
Bedroom 2 Bathroom	1.50X2.60
Bedroom 3	3.90X4.00
Bedroom 3 Bathroom	1.70X2.60
Guest Toilet	2.40X1.10
Maid's Room	2.00X1.75
Maid's Bath	1.00X1.75
Roof (TERRACE)	103.10 m2

Disclaimer:

- 1. Renders and accompanying visual materials are not to scale and are intended for illustrative purposes.
- 2. All Landscaping is not included in the property and solely for illustrative purposes.
- 3. Roof finishes and pergolas are for presentation purposes only and are optional based on client's request.
- 4. Palm Hills Developments retains the right to make alterations.

Hazel Building



Disclaimer:

1. Renders and accompanying visual materials are not to scale and are intended for illustrative purposes.
2. All Landscaping is not included in the property and solely for illustrative purposes.
3. Roof finishes and pergolas are for presentation purposes only and are optional based on client's request.
4. Palm Hills Developments retains the right to make alterations.

Hazel Building

Apartment 01 Area: 150.20m²
Apartment 02 Area: 110.30m²
Apartment 03 Area: 152.90m²
Apartment 04 Area: 152.90m²
Apartment 05 Area: 110.30m²
Apartment 06 Area: 150.20m²

Ground Floor



Apartment - 01	
Vestibule	1.35X5.40
Reception & Dining	4.45X6.15
Terrace	4.25X1.55
Kitchen	2.45X2.00
G.Toilet	2.30X1.20
Master Bedroom 1	3.75X3.60
Bathroom 1	2.55X2.00
Master Bedroom 2	3.20X3.60
Bathroom 2	3.20X2.00
Master Bedroom 3	3.60X3.20
Bathroom 3	2.30X2.00

Apartment - 02	
Vestibule	1.35X2.10
Reception & Dining	3.80X6.70
Terrace	3.65X1.80
Kitchen	2.45X2.20
G.Toilet	2.20X1.30
Master Bedroom 1	3.45X3.40
Bathroom 1	2.25X1.70
Master Bedroom 2	3.60X3.45
Bathroom 2	2.25X1.70

Apartment - 03	
Vestibule	1.35X5.40
Reception & Dining	4.85X6.15
Terrace	4.70X1.55
Kitchen	2.85X2.00
G.Toilet	2.75X1.20
Master Bedroom 1	3.75X3.40
Bathroom 1	2.30X1.70
Master Bedroom 2	3.20X3.60
Bathroom 2	3.20X1.70
Master Bedroom 3	3.60X3.20
Bathroom 3	2.75X2.00

Apartment - 04	
Vestibule	1.35X5.40
Reception & Dining	4.85X6.15
Terrace	4.70X1.55
Kitchen	2.85X2.00
G.Toilet	2.75X1.20
Master Bedroom 1	3.75X3.40
Bathroom 1	2.30X1.70
Master Bedroom 2	3.20X3.60
Bathroom 2	3.10X1.70
Master Bedroom 3	3.60X3.20
Bathroom 3	2.30X2.00

Apartment - 05	
Vestibule	1.35X2.10
Reception & Dining	3.80X6.70
Terrace	3.65X1.80
Kitchen	2.45X2.20
G.Toilet	2.20X1.30
Master Bedroom 1	3.45X3.40
Bathroom 1	2.25X1.70
Master Bedroom 2	3.60X3.45
Bathroom 2	2.25X1.70

Apartment - 06	
Vestibule	1.35X5.40
Reception & Dining	4.45X6.15
Terrace	4.25X1.55
Kitchen	2.45X2.00
G.Toilet	2.30X1.20
Master Bedroom 1	3.75X3.60
Bathroom 1	2.55X2.00
Master Bedroom 2	3.20X3.60
Bathroom 2	3.20X2.00
Master Bedroom 3	3.60X3.20
Bathroom 3	2.30X2.00

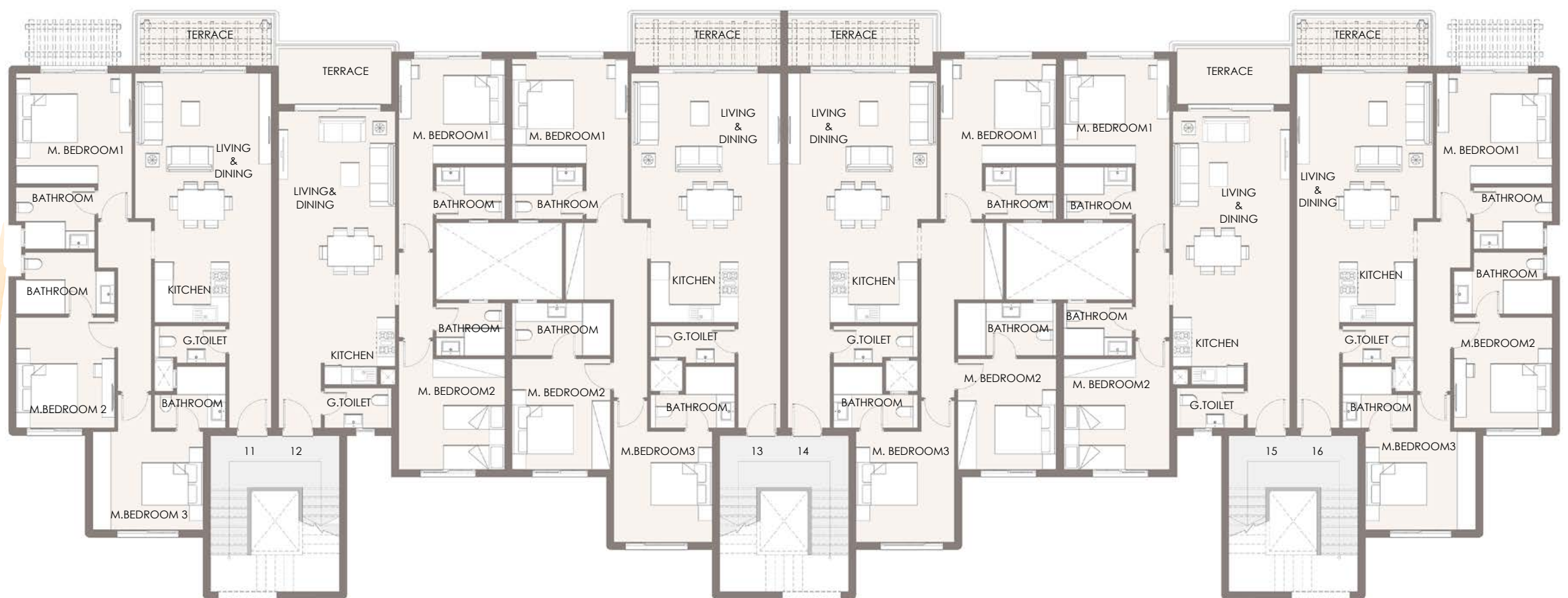
Disclaimer:

1. Renders and accompanying visual materials are not to scale and are intended for illustrative purposes.
2. All Landscaping is not included in the property and solely for illustrative purposes.
3. Roof finishes and pergolas are for presentation purposes only and are optional based on client's request.
4. Palm Hills Developments retains the right to make alterations.

Hazel Building

Apartment 11 Area: 144.90m²
Apartment 12 Area: 110.30m²
Apartment 13 Area: 152.90m²
Apartment 14 Area: 152.90m²
Apartment 15 Area: 110.30m²
Apartment 16 Area: 144.90m²

First Floor



Apartment - 11	
Vestibule	1.35X5.40
Reception & Dining	4.45X6.15
Terrace	4.25X1.55
Kitchen	2.45X2.00
G.Toilet	2.30X1.20
Master Bedroom 1	3.75X3.60
Bathroom 1	2.55X2.00
Master Bedroom 2	3.20X3.60
Bathroom 2	3.20X2.00
Master Bedroom 3	3.60X3.20
Bathroom 3	2.30X2.00

Apartment - 12	
Vestibule	1.35X2.10
Reception & Dining	3.80X6.70
Terrace	3.65X1.80
Kitchen	2.45X2.20
G.Toilet	2.20X1.30
Master Bedroom 1	3.45X3.40
Bathroom 1	2.25X1.70
Master Bedroom 2	3.60X3.45
Bathroom 2	2.25X1.70

Apartment - 13	
Vestibule	1.35X5.40
Reception & Dining	4.85X6.15
Terrace	4.70X1.55
Kitchen	2.85X2.00
G.Toilet	2.75X1.20
Master Bedroom 1	3.75X3.40
Bathroom 1	2.30X1.70
Master Bedroom 2	3.20X3.60
Bathroom 2	3.10X1.70
Master Bedroom 3	3.60X3.20
Bathroom 3	2.30X2.00

Apartment - 14	
Vestibule	1.35X5.40
Reception & Dining	4.85X6.15
Terrace	4.70X1.55
Kitchen	2.85X2.00
G.Toilet	2.75X1.20
Master Bedroom 1	3.75X3.40
Bathroom 1	2.30X1.70
Master Bedroom 2	3.20X3.60
Bathroom 2	3.10X1.70
Master Bedroom 3	3.60X3.20
Bathroom 3	2.30X2.00

Apartment - 15	
Vestibule	1.35X2.10
Reception & Dining	3.80X6.70
Terrace	3.65X1.80
Kitchen	2.45X2.20
G.Toilet	2.20X1.30
Master Bedroom 1	3.45X3.40
Bathroom 1	2.25X1.70
Master Bedroom 2	3.60X3.45
Bathroom 2	2.25X1.70

Apartment - 16	
Vestibule	1.35X5.40
Reception & Dining	4.45X6.15
Terrace	4.25X1.55
Kitchen	2.45X2.00
G.Toilet	2.30X1.20
Master Bedroom 1	3.75X3.60
Bathroom 1	2.55X2.00
Master Bedroom 2	3.20X3.60
Bathroom 2	3.20X2.00
Master Bedroom 3	3.60X3.20
Bathroom 3	2.30X2.00

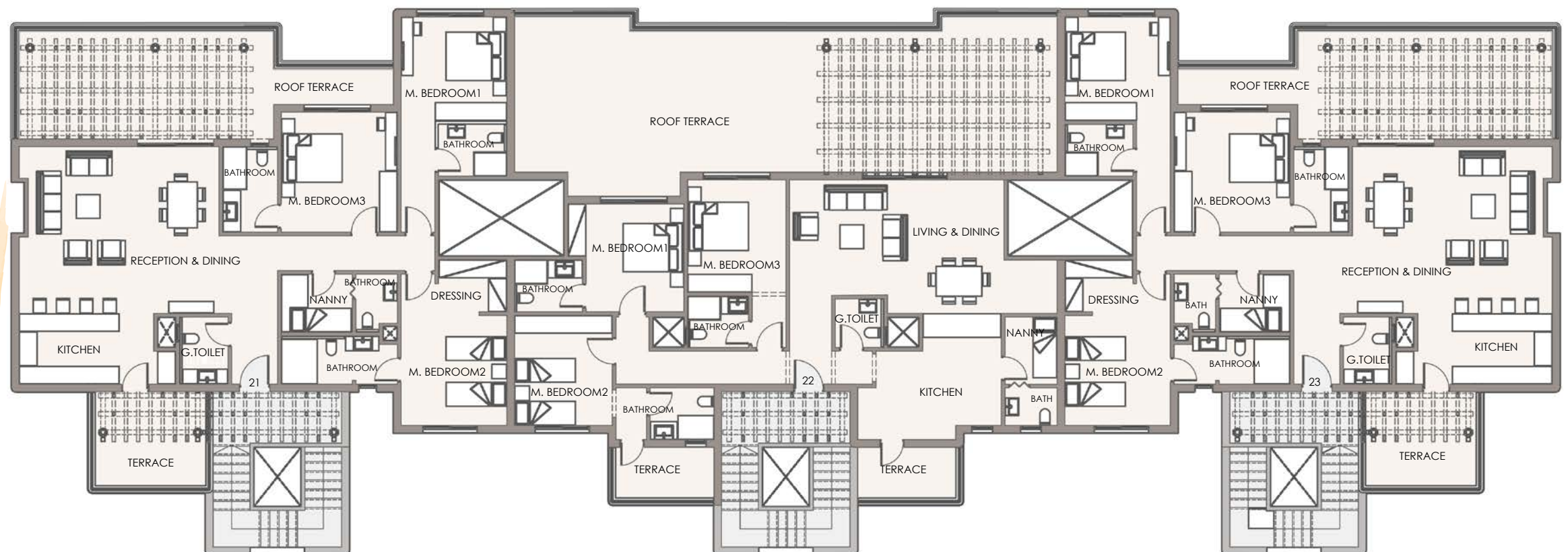
Disclaimer:

1. Renders and accompanying visual materials are not to scale and are intended for illustrative purposes.
2. All Landscaping is not included in the property and solely for illustrative purposes.
3. Roof finishes and pergolas are for presentation purposes only and are optional based on client's request.
4. Palm Hills Developments retains the right to make alterations.

Hazel Building

Apartment 21 Area: 178.00m²
Apartment 22 Area: 158.90m²
Apartment 23 Area: 178.00m²

Second Floor



Apartment - 21	
Roof Terrace	52.00 m ²
Vestibule	2.50X1.30
G.Toilet	1.60X2.20
Kitchen	2.30X5.10
Reception & Dining	6.55X5.45
Master Bedroom 1	3.45X3.40
Bathroom 1	2.25X1.70
Master Bedroom 2	3.60X3.45
Dressing	2.25X1.70
Bathroom 2	3.80X1.60
Master Bedroom 3	3.80X3.95
Bathroom 3	1.80X2.80
Nanny	2.30X1.90
Nanny's Toilet	1.35X1.90

Apartment - 22	
Roof Terrace	107.20 m ²
Vestibule	1.37X2.90
Reception	7.00X3.70
Dining	4.40X2.40
Kitchen	4.70X4.14
G.Toilet	1.60X1.60
Master Bedroom 1	3.80X3.55
Bathroom 1	2.25X1.70
Master Bedroom 2	3.20X3.60
Bathroom 2	3.20X1.70
Master Bedroom 3	3.20X3.70
Bathroom 3	2.00X1.70
Nanny	2.20X1.70
Nanny's Toilet	1.23X1.70

Apartment - 23	
Roof Terrace	52.00 m ²
Vestibule	2.30X1.50
G.Toilet	1.60X2.20
Kitchen	2.30X5.10
Reception & Dining	6.55X5.45
Master Bedroom 1	3.45X3.40
Bathroom 1	2.25X1.70
Master Bedroom 2	3.60X3.45
Dressing	2.25X1.70
Bathroom 2	3.80X1.60
Master Bedroom 3	3.80X3.95
Bathroom 3	1.80X2.80
Nanny	2.30X1.90
Nanny's Toilet	1.35X1.90

Disclaimer:

1. Renders and accompanying visual materials are not to scale and are intended for illustrative purposes.
2. All Landscaping is not included in the property and solely for illustrative purposes.
3. Roof finishes and pergolas are for presentation purposes only and are optional based on client's request.
4. Palm Hills Developments retains the right to make alterations.

Savannah



Disclaimer:

1. Renders and accompanying visual materials are not to scale and are intended for illustrative purposes.
2. All Landscaping is not included in the property and solely for illustrative purposes.
3. Roof finishes and pergolas are for presentation purposes only and are optional based on client's request.
4. Palm Hills Developments retains the right to make alterations.

Savannah

Apartment 01 Area: 99.00m²
Apartment 02 Area: 105.00m²
Apartment 03 Area: 109.00m²
Apartment 04 Area: 109.00m²
Apartment 05 Area: 109.00m²
Apartment 06 Area: 109.00m²
Apartment 07 Area: 105.00m²
Apartment 08 Area: 99.00m²

Ground Floor



Apartment - 01	
Living & Dining	7.05X3.80
Kitchen	2.90X1.70
Terrace	3.35X1.30
Master Bedroom	3.60x3.60
Master Bathroom	2.40x1.70
Bedroom I	3.60x3.60
Bathroom I	1.70X2.40

Apartment - 02	
Living & Dining	3.80X6.30
Terrace	3.65X2.00
Kitchen	2.40x2.60
Master Bedroom	3.45X3.60
Master Bathroom	2.25X1.70
Bedroom I	3.45x3.60
Bathroom I	2.25X1.70

Apartment - 03	
Living & Dining	3.80X6.30
Terrace	3.65X2.00
Kitchen	2.30X2.60
G.Toilet	2.20X1.30
Master Bedroom	3.45X3.60
Master Bathroom	2.25X1.70
Bedroom I	3.45x3.60
Bathroom I	2.25X1.70

Apartment - 04	
Living & Dining	3.80X6.30
Terrace	3.65X2.00
Kitchen	2.30X2.60
G.Toilet	2.20X1.30
Master Bedroom	3.45X3.60
Master Bathroom	2.25X1.70
Bedroom I	3.45x3.60
Bathroom I	2.25X1.70

Apartment - 05	
Living & Dining	3.80X6.30
Terrace	3.65X2.00
Kitchen	2.30X2.60
G.Toilet	2.20X1.30
Master Bedroom	3.45X3.60
Master Bathroom	2.25X1.70
Bedroom I	3.45x3.60
Bathroom I	2.25X1.70

Apartment - 06	
Living & Dining	3.80X6.30
Terrace	3.65X2.00
Kitchen	2.30X2.60
G.Toilet	2.20X1.30
Master Bedroom	3.45X3.60
Master Bathroom	2.25X1.70
Bedroom I	3.45x3.60
Bathroom I	2.25X1.70

Apartment - 07	
Living & Dining	3.80X7.60
Terrace	3.65X2.00
Kitchen	2.40x2.70
Master Bedroom	3.45X3.60
Master Bathroom	2.25X1.70
Bedroom I	3.45x3.60
Bathroom I	2.25X1.70

Apartment - 08	
Living & Dining	7.05X3.80
Kitchen	2.90X1.70
Terrace	3.35X1.30
Master Bedroom	3.60x3.60
Master Bathroom	2.40x1.70
Bedroom I	3.60x3.60
Bathroom I	1.70X2.40

Disclaimer:

- 1. Renders and accompanying visual materials are not to scale and are intended for illustrative purposes.
- 2. All Landscaping is not included in the property and solely for illustrative purposes.
- 3. Roof finishes and pergolas are for presentation purposes only and are optional based on client’s request.
- 4. Palm Hills Developments retains the right to make alterations.

Savannah

Apartment 11 Area: 99.00m²
Apartment 12 Area: 105.00m²
Apartment 13 Area: 109.00m²
Apartment 14 Area: 109.00m²
Apartment 15 Area: 109.00m²
Apartment 16 Area: 109.00m²
Apartment 17 Area: 105.00m²
Apartment 18 Area: 99.00m²

First Floor



Apartment - 11	
Living & Dining	7.05X3.80
Kitchen	2.90X1.70
Terrace	3.35X1.30
Master Bedroom	3.60x3.60
Master Bathroom	2.40x1.70
Bedroom 1	3.60x3.60
Bathroom 1	1.70X2.40

Apartment - 12	
Living & Dining	3.80X7.60
Terrace	3.65X2.00
Kitchen	2.40x2.70
Master Bedroom	3.45X3.60
Master Bathroom	2.25X1.70
Bedroom 1	3.45x3.60
Bathroom 1	2.25X1.70

Apartment - 13	
Living & Dining	3.80X6.30
Terrace	3.65X2.00
Kitchen	2.30X2.60
G.Toilet	2.20X1.30
Master Bedroom	3.45X3.60
Master Bathroom	2.25X1.70
Bedroom 1	3.45x3.60
Bathroom 1	2.25X1.70

Apartment - 14	
Living & Dining	3.80X6.30
Terrace	3.65X2.00
Kitchen	2.30X2.60
G.Toilet	2.20X1.30
Master Bedroom	3.45X3.60
Master Bathroom	2.25X1.70
Bedroom 1	3.45x3.60
Bathroom 1	2.25X1.70

Apartment - 15	
Living & Dining	3.80X6.30
Terrace	3.65X2.00
Kitchen	2.30X2.60
G.Toilet	2.20X1.30
Master Bedroom	3.45X3.60
Master Bathroom	2.25X1.70
Bedroom 1	3.45x3.60
Bathroom 1	2.25X1.70

Apartment - 16	
Living & Dining	3.80X6.30
Terrace	3.65X2.00
Kitchen	2.30X2.60
G.Toilet	2.20X1.30
Master Bedroom	3.45X3.60
Master Bathroom	2.25X1.70
Bedroom 1	3.45x3.60
Bathroom 1	2.25X1.70

Apartment - 17	
Living & Dining	3.80X7.60
Terrace	3.65X2.00
Kitchen	2.40x2.70
Master Bedroom	3.45X3.60
Master Bathroom	2.25X1.70
Bedroom 1	3.45x3.60
Bathroom 1	2.25X1.70

Apartment - 18	
Living & Dining	7.05X3.80
Kitchen	2.90X1.70
Terrace	3.35X1.30
Master Bedroom	3.60x3.60
Master Bathroom	2.40x1.70
Bedroom 1	3.60x3.60
Bathroom 1	1.70X2.40

Disclaimer:

- 1. Renders and accompanying visual materials are not to scale and are intended for illustrative purposes.
- 2. All Landscaping is not included in the property and solely for illustrative purposes.
- 3. Roof finishes and pergolas are for presentation purposes only and are optional based on client’s request.
- 4. Palm Hills Developments retains the right to make alterations.

Savannah

Apartment 21 Area: 142.00m²
Apartment 22 Area: 92.00m²
Apartment 23 Area: 92.00m²
Apartment 24 Area: 92.00m²
Apartment 25 Area: 92.00m²
Apartment 26 Area: 142.00m²

Second Floor



Apartment - 21	
Living & Dining	5.55X5.65+1.80X4.10
Kitchen	1.80X3.25
Terrace	3.90X4.40+3.45X5.85
Master Bedroom 1	3.60X3.60
Master Bathroom 1	2.40X1.70
Master Bedroom 2	3.50X3.80
Master Bathroom 2	1.70X2.40
Dressing	1.80X2.15
Bedroom 1	3.60X3.60
Bathroom 1	1.70X2.40
Lobby	1.55X3.25

Apartment - 22	
Living & Dining	3.80X5.50
Terrace	3.65X2.50
Kitchen	2.40X3.05
Master Bedroom	3.45X3.60
Master Bathroom	2.25X1.70
Bedroom 1	3.45X3.60
Bathroom 1	2.25X1.70

Apartment - 23	
Living & Dining	3.80X5.50
Terrace	3.65X2.50
Kitchen	2.40X3.05
Master Bedroom 1	3.45X3.60
Master Bathroom 1	2.25X1.70
Bedroom 1	3.45X3.60
Bathroom 1	2.25X1.70

Apartment - 24	
Living & Dining	3.80X5.50
Terrace	3.65X2.50
Kitchen	2.40X3.05
Master Bedroom	3.45X3.60
Master Bathroom	2.25X1.70
Bedroom 1	3.45X3.60
Bathroom 1	2.25X1.70

Apartment - 25	
Living & Dining	3.80X5.50
Terrace	3.65X2.50
Kitchen	2.40X3.05
Master Bedroom	3.45X3.60
Master Bathroom	2.25X1.70
Bedroom 1	3.45X3.60
Bathroom 1	2.25X1.70

Apartment - 26	
Living & Dining	5.55X5.65+1.80X4.10
Kitchen	1.80X3.25
Terrace	3.90X4.40+3.45X5.85
Master Bedroom 1	3.60X3.60
Master Bathroom 1	2.40X1.70
Master Bedroom 2	3.50X3.80
Master Bathroom 2	1.70X2.40
Dressing	1.80X2.15
Bedroom 1	3.60X3.60
Bath	1.70X2.40
Lobby	1.55X3.25

Disclaimer:

- 1. Renders and accompanying visual materials are not to scale and are intended for illustrative purposes.
- 2. All Landscaping is not included in the property and solely for illustrative purposes.
- 3. Roof finishes and pergolas are for presentation purposes only and are optional based on client’s request.
- 4. Palm Hills Developments retains the right to make alterations.

Pine Building



Disclaimer:

1. Renders and accompanying visual materials are not to scale and are intended for illustrative purposes.
2. All Landscaping is not included in the property and solely for illustrative purposes.
3. Roof finishes and pergolas are for presentation purposes only and are optional based on client's request.
4. Palm Hills Developments retains the right to make alterations.

Pine Building

Apartment 01 Area: 150.50m²
Apartment 02 Area: 107.00m²
Apartment 03 Area: 107.00m²
Apartment 04 Area: 150.50m²

Ground Floor



Apartment - 01	
Vestibule	1.35X2.40
Reception &Dining	4.45X6.15
Terrace	4.25X1.55
Kitchen	2.45X2.00
G.Toilet	2.30X1.20
Master Bedroom 1	3.75X3.60
Bathroom 1	2.55X2.00
Master Bedroom 2	3.20X3.60
Bathroom 2	3.20X2.00
Master Bedroom 3	3.60X3.20
Bathroom 3	2.30X2.00

Apartment - 02	
Vestibule	1.35X2.10
Reception &Dining	3.80X6.70
Terrace	3.65X1.80
Kitchen	2.45X2.20
G.Toilet	2.20X1.30
Master Bedroom 1	3.20X3.40
Bathroom 1	2.00X1.70
Master Bedroom 2	3.20X3.60
Bathroom 2	2.00X1.70

Apartment - 03	
Vestibule	1.35X2.10
Reception &Dining	3.80X6.70
Terrace	3.65X1.80
Kitchen	2.45X2.20
G.Toilet	2.20X1.30
Master Bedroom 1	3.20X3.40
Bathroom 1	2.00X1.70
Master Bedroom 2	3.20X3.60
Bathroom 2	2.00X1.70

Apartment - 04	
Vestibule	1.35X2.40
Reception &Dining	4.45X6.15
Terrace	4.25X1.55
Kitchen	2.45X2.00
G.Toilet	2.30X1.20
Master Bedroom 1	3.75X3.60
Bathroom 1	2.55X2.00
Master Bedroom 2	3.20X3.60
Bathroom 2	3.20X2.00
Master Bedroom 3	3.60X3.20
Bathroom 3	2.30X2.00

Disclaimer:

- 1. Renders and accompanying visual materials are not to scale and are intended for illustrative purposes.
- 2. All Landscaping is not included in the property and solely for illustrative purposes.
- 3. Roof finishes and pergolas are for presentation purposes only and are optional based on client’s request.
- 4. Palm Hills Developments retains the right to make alterations.

Pine Building

Apartment 11 Area: 145.20m²
Apartment 12 Area: 107.00m²
Apartment 13 Area: 107.00m²
Apartment 14 Area: 145.20m²

First Floor



Apartment - 11	
Vestibule	1.35X2.40
Reception &Dining	4.45X6.15
Terrace	4.25X1.55
Kitchen	2.45X2.00
G.Toilet	2.30X1.20
Master Bedroom 1	3.75X3.60
Bathroom 1	2.55X2.00
Master Bedroom 2	3.20X3.60
Bathroom 2	3.20X2.00
Master Bedroom 3	3.60X3.20
Bathroom 3	2.30X2.00

Apartment - 12	
Vestibule	1.35X2.10
Reception &Dining	3.80X6.70
Terrace	3.65X1.80
Kitchen	2.45X2.20
G.Toilet	2.20X1.30
Master Bedroom 1	3.20X3.40
Bathroom 1	2.00X1.70
Master Bedroom 2	3.20X3.60
Bathroom 2	2.00X1.70

Apartment - 13	
Vestibule	1.35X2.10
Reception &Dining	3.80X6.70
Terrace	3.65X1.80
Kitchen	2.45X2.20
G.Toilet	2.20X1.30
Master Bedroom 1	3.20X3.40
Bathroom 1	2.00X1.70
Master Bedroom 2	3.20X3.60
Bathroom 2	2.00X1.70

Apartment - 14	
Vestibule	1.35X2.40
Reception &Dining	4.45X6.15
Terrace	4.25X1.55
Kitchen	2.45X2.00
G.Toilet	2.30X1.20
Master Bedroom 1	3.75X3.60
Bathroom 1	2.55X2.00
Master Bedroom 2	3.20X3.60
Bathroom 2	3.20X2.00
Master Bedroom 3	3.60X3.20
Bathroom 3	2.30X2.00

Disclaimer:

- 1. Renders and accompanying visual materials are not to scale and are intended for illustrative purposes.
- 2. All Landscaping is not included in the property and solely for illustrative purposes.
- 3. Roof finishes and pergolas are for presentation purposes only and are optional based on client’s request.
- 4. Palm Hills Developments retains the right to make alterations.

Pine Building

Apartment 21 Area: 174.00m²
Apartment 22 Area: 174.00m²

Second Floor



Apartment - 21	
Vestibule	1.50X2.30
G.Toilet	1.60X2.20
Kitchen	2.30X5.10
Reception & Dining	6.55X5.45
Master Bedroom 1	3.20X3.40
Bathroom 1	2.00X1.70
Master Bedroom 2	3.60X3.20
Dressing	2.00X1.70
Bathroom 2	3.80X1.60
Master Bedroom 3	3.80X3.95
Bathroom 3	1.80X2.80
Nanny	2.30X1.90
Nanny's Toilet	1.35X1.90
Roof Terrace	51.70 m ²

Apartment - 22	
Vestibule	1.50X2.30
G.Toilet	1.60X2.20
Kitchen	2.30X5.10
Reception & Dining	6.55X5.45
Master Bedroom 1	3.20X3.40
Bathroom 1	2.00X1.70
Master Bedroom 2	3.60X3.20
Dressing	2.00X1.70
Bathroom 2	3.80X1.60
Master Bedroom 3	3.80X3.95
Bathroom 3	1.80X2.80
Nanny	2.30X1.90
Nanny's Toilet	1.35X1.90
Roof Terrace	51.70 m ²

Disclaimer:

- 1. Renders and accompanying visual materials are not to scale and are intended for illustrative purposes.
- 2. All Landscaping is not included in the property and solely for illustrative purposes.
- 3. Roof finishes and pergolas are for presentation purposes only and are optional based on client’s request.
- 4. Palm Hills Developments retains the right to make alterations.

Aria Cabana

Total Built Up Area:
45.10m²



Disclaimer:

- 1. Renders and accompanying visual materials are not to scale and are intended for illustrative purposes.
- 2. All Landscaping is not included in the property and solely for illustrative purposes.
- 3. Roof finishes and pergolas are for presentation purposes only and are optional based on client's request.
- 4. Palm Hills Developments retains the right to make alterations.

Aria Cabana



Disclaimer:

- 1. Renders and accompanying visual materials are not to scale and are intended for illustrative purposes.
- 2. All Landscaping is not included in the property and solely for illustrative purposes.
- 3. Roof finishes and pergolas are for presentation purposes only and are optional based on client’s request.
- 4. Palm Hills Developments retains the right to make alterations.



PALM HILLS

DEVELOPMENTS

ZAMALEK:

1, El Kamel Mohamed St.
Tel: +202 2737 5530 - 31 - 32 - 33

5th SETTLEMENT:

Namaa Building # 75,
1st section, Road 90
Tel: +202 2810 4530 - 31 - 33

6th OF OCTOBER:

Palm Hills October (Palm Central)
Tel: +202 3886 0103-04
Ext: 8812
Mob: +2 010 6668 6108

ALEXANDRIA:

30 Patrice Lumumba,
Tel: +203 033926010 - 033926002

19743

www.palmhillsdevelopments.com